



**alarge**  
+90 212 924 56 52

**AGILE, ROBUST,  
SMART LAB SYSTEM.  
SUSTAINABILITY AND RESILIENCE.**

## **AL KAR CARBON BLACK CONTENT TEST EQUIPMENT**

**ISO 6964,  
ASTM D 1603**  
standards.

Alarge AL KAR Carbon Black Content Test Equipment performed to measure the carbon black content of the engineering plastics.

### **TECHNICAL PROPERTIES**

- In compliance with international standards
- Operation under high temperature, inert atmosphere
- The amount of carbon black is calculated from the weight difference.
- Gas cleaning system
- Precise carbon determination by inert atmosphere control
- PID Control System
- Touch screen operation panel
- Temperature range of 550 and 900 ° C
- Quartz tube and ceramic insulation.



**www.alarge.com.tr**

**ALARGE ALIÇ AĞACI MAK. ELEK. AR-GE SAN. TİC. LTD. ŞTİ.**

Çifte Havuzlar Mah. Eski Londra Asfaltı Cd. YTÜ Teknopark D2 Blok No: 2B01 Davutpaşa - İstanbul/TÜRKİYE

**Faks: +90 212 278 61 33 Mail: info@alarge.com.tr**

# AL KAR CARBON BLACK CONTENT TEST EQUIPMENT TECHNICAL SPECIFICATIONS

| MODEL                   | AL-KAR 1              | AL-KAR 2       | AL-KAR 3       |
|-------------------------|-----------------------|----------------|----------------|
| Standards               | ISO 6964, ASTM D 1603 |                |                |
| Type                    | Single Furnace        | Double Furnace | Triple Furnace |
| Temperature Range       | 50-900 °C             |                |                |
| Temperature Sensitivity | 0,1 °C                |                |                |
| Temperature Control     | Digital PID           |                |                |
| Max. Sample Weight      | 2 g                   | 2 x 2 g        | 3 x 2 g        |
| Gas                     | %99,9 Nitrogen        |                |                |
| Net Weight              | 40 kg                 | 60             | 80             |
| Voltage                 | 220 V                 |                |                |
| Dimensions(WxLxH) cm    | 40x70x70              | 40x85x70       | 40x100x70      |

## AL KAR – 2, 3 CARBON BLACK EQUIPMENT WITH MULTIPLE FURNACES

### POSSIBILITY TO PERFORM MULTIPLE SEPARATE TESTS AT THE SAME TIME

#### Apparatus:

- ✓ ceramic boat crucibles
- ✓ drying tube and wash bottles for safety
- ✓ Quartz test tubes
- ✓ Gas cleaning apparatus



## AL-MIC MICROTOM

Al-MIC Microtom is used for cutting thin samples for OIT device or Carbon Black Distribution Device

- ✓ The cutting range: 20 - 750 microns
- ✓ Servo motor control.
- ✓ High sensitivity with special knife.

### Technical Specifications :

- ✓ Automatic or manual sample cutting.
- ✓ 4.7" touch screen panel.
- ✓ Security sensor
- ✓ Panasonic PLC control



## AL POL POLARIZED MICROSCOPE

**Optical System:** UCIS infinity independent achromatic optical system

**Observation Tube:** Seidentopf trinocular viewing head, inclined 30°, rotatable 360°, 50-75 mm interpupillary distance settings, ±5 diopter adjustment

**Eyepiece:** WF10x plan eyepieces, 20 mm field of view, high eye point

**Objective:** Infinity achromatic objective 4X, 10X, 40X, 100X

**Nose-piece:** Quadruple nose-piece inward facing with positive click stops



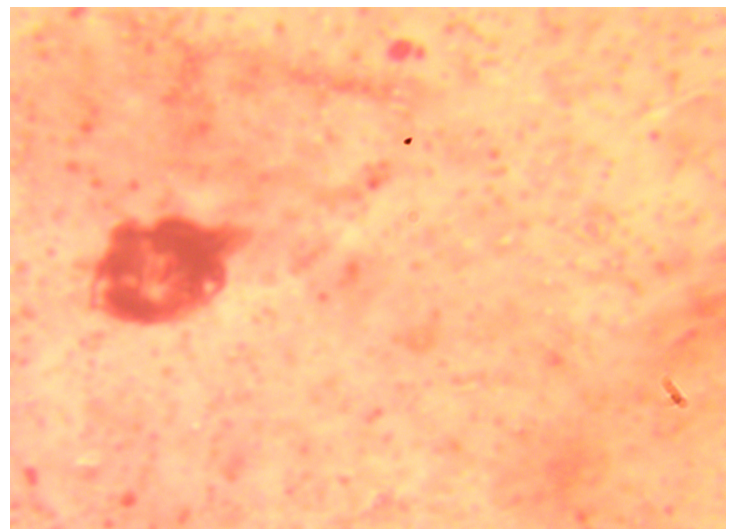


**Condenser:**

Abbe condenser  
N.A.1.25 With iris diaphragm,  
phase-contrast / dark filed slide holder,  
hand-wheel lift, precise condenser  
up and down adjustable system. The  
condenser bracket is equipped with a  
condenser center adjustment device  
for easy alignment of the center of the  
illumination system. The condenser  
aperture diaphragm uses the same  
color as the color of the objective lens to  
facilitate high resolution, high contrast  
images.

**Coarse and Fine Focus:** Low position  
coaxial coarse and fine focus  
mechanism with markings on fine focus  
knobs. Moving range 9mm. Fine focus  
sensitivity 0.001 mm

**Stage:** Mechanical stage 156\*138mm,  
moving range 76\*54mm. Sensitivity is 0.1  
mm, two calipers, moving ruler, XY low  
position hand wheel.



**CONFIGURATION LIST**

| MODEL   | AL-MIC200 |
|---|-----------|
| UB200 Body  | ✓         |
| Trinocular, Interpupillary Distance 50-75 mm (20:80)                | ✓         |
| High Eye-Point Plan Eyepiece WF10X/20                               | ✓         |
| Infinity Achromatic Objective 4X N.A.0.13                           | ✓         |
| Infinity Achromatic Objective 10X N.A. 0.30                         | ✓         |
| Infinity Achromatic Objective 40X(S) N.A.0.70                       | ✓         |
| Infinity Achromatic Objective 100X(S)/(Oil) N.A. 1.25               | ✓         |
| Mechanical Stage, Right Handed, 156X138 mm, Movement Range 76X54 mm | ✓         |
| Quadruple Nosepiece, Inward Facing                                  | ✓         |
| Abbe Condenser  | ✓         |
| Kohler Illuminator (With Field Diaphragm)                           | ✓         |
| for 6V 20W Halogen Lamps  | ✓         |
| 1X C-Mount  | ✓         |
| Polarizer   | ✓         |
| Analyzer  | ✓         |
| 11.6" LCD Screen  | ✓         |
| Blue Filter (φ38)   | ✓         |
| Ground Glass (φ38)  | ✓         |
| 6V 20W Osram Lamp   | ✓ ✓       |
| 250V/3.15A φ5X20 Fuse   | ✓ ✓ ✓     |
| Immersion Oil   | ✓         |
| Dust Cover  | ✓         |
| 2mm Allen Screw Driver  | ✓         |
| Power Cord  | ✓         |