



AGILE, ROBUST,  
SMART LAB SYSTEM.

SUSTAINABILITY AND RESILIENCE.

\*Patented TR 2016/20266

\*Boutique manufacturing  
up to 4000 diameter

END  
CAPS



End caps are used intensively to measure strength performance of thermoplastic pipes under pressure in compliance with TS EN ISO 1167, ASTM D 1598-1599 standards.

EASY ASSEMBLY

HIGH PRESSURE

NO NEED TO PRESS

+90 212 924 56 52

[www.alarge.com.tr](http://www.alarge.com.tr)

ALARGE ALIÇ AĞACI MAK. ELEK. AR-GE SAN. TİC. LTD. ŞTİ.

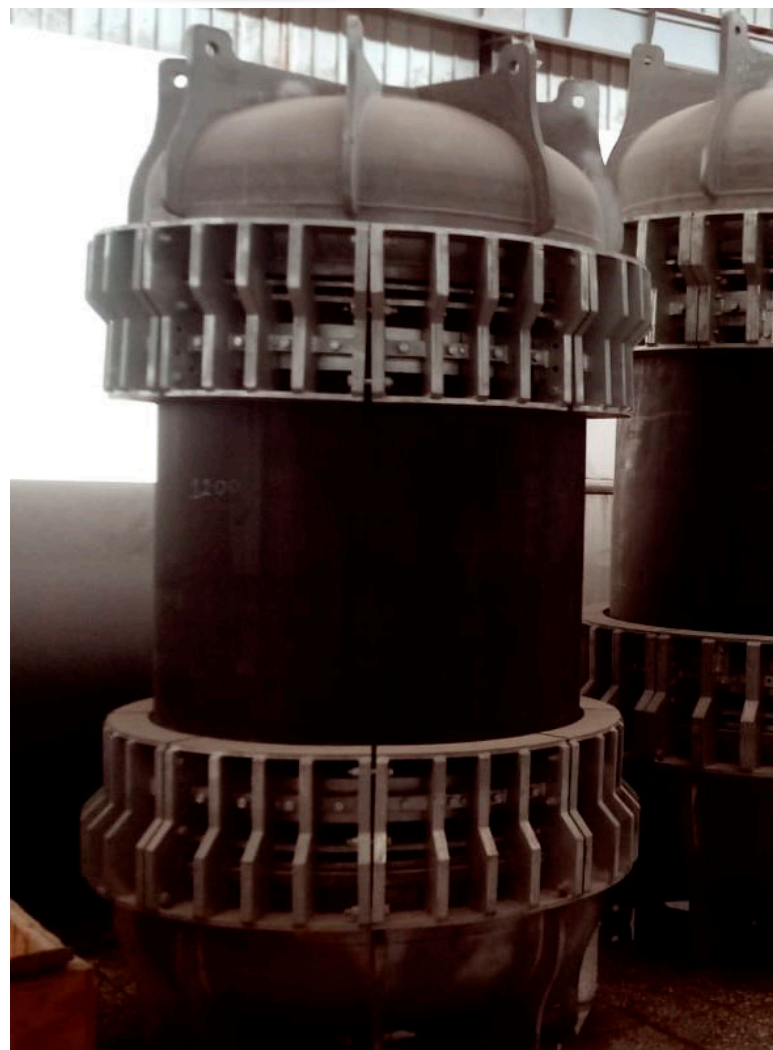
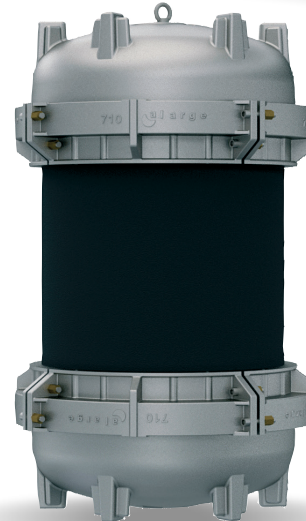
Çifte Havuzlar Mah. Eski Londra Asfaltı Cd. YTÜ Teknopark D2 Blok No: 2B01 Davutpaşa - İstanbul/TÜRKİYE

Fax: +90 212 278 61 33 Mail: [info@alarge.com.tr](mailto:info@alarge.com.tr)

# END CAPS

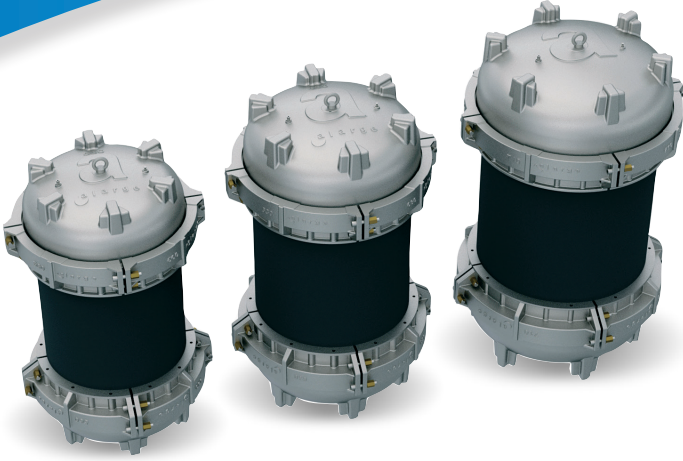
## TECHNICAL SPECIFICATIONS

- ✓ Ideal design for leak-free, long term tests
- ✓ Designed to tolerate the strain and shape changing expansion of pipe during hydrostatic pressure tests
- ✓ Does not require hammering or pressing, special gasket design and gasket tightened with screw system
- ✓ Adaptive silicon/rubber one or two multiple lips gasket joint
  - ✓ Stainless steel fittings
  - ✓ In compliance with TS EN ISO 1167, ASTM D 1598-1599 standards
  - ✓ AISI 304, 316 and 316L stainless steel, precision pressure and sand casting
- ✓ Suitable for 16 - 2600 mm PE, PP, PE-RT, PEX and PVC pipes
  - ✓ Optional galvenize steel



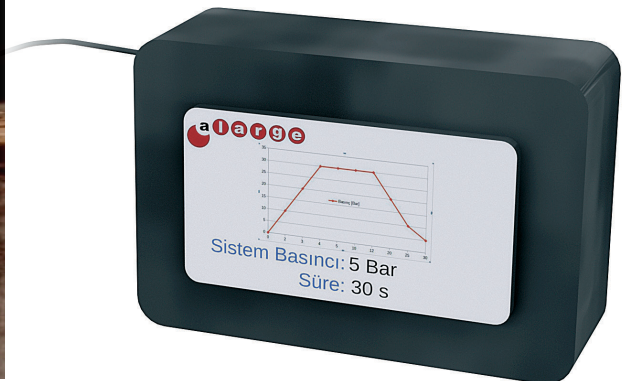


# ARTPM ELECTRONIC KIT



## ALARGE REAL TIME PRESSURE MEASUREMENT KIT

- ✓ Wi-Fi Bluetooth connections
- ✓ Optional touch screen integrated into Alarge Reporting Software
- ✓ Real time display of pressure and test time
- ✓ Real time graphic drawing and display
- ✓ Easy connection to the touch screen with USB and RS 232
- ✓ Suitable for all end cap models

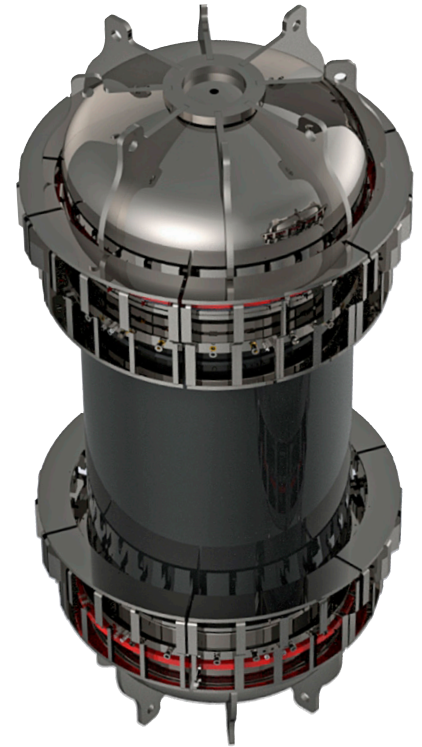


# END CAPS

## TECHNICAL SPECIFICATIONS

MODEL	ALCAPLT					
Diameter Ø (mm)	16	20	25	32	40	50
	63	75	90			
Max. Test Pressure (Bar)	150					
Manufacturing Method	Machining / Precision Castings					
Material	AISI 304, 316, 316 L					
Diameter Ø (mm)	110	125	140	160	180	200
	225	250	280	315	355	400
Max. Test Pressure (Bar)	100					
Manufacturing Method	Hot Galvanized Stees Sheet / Precision Casting / Machining					
Material	AISI 304, 316, 316 L / Steel Sheet					
Diameter Ø (mm)	450	500	560	630	710	
Max. Test Pressure (Bar)	100	90	80	70	70	
Manufacturing Method	Sand Casting, Machining / Hot Galvanized Steel Sheet					
Material	AISI 304, 316, 316 L					
Diameter Ø (mm)	800	900	1000	1100	1200	1400
	1600	1800	2000	2200	2400	2600
Max. Test Pressure (Bar)	50					
Manufacturing Method	Hot Galvanized Stees Sheet / Precision Casting					
Material	AISI 304, 316, 316 L					
Compability with pipes	✓					
Air Purge Valve	✓					
Easy Connection	✓					
Eyebolt	✓					
Gasket Gauge Screw	✓					
Standards	ISO 1167, ASTM D 1598, ASTM D 1599					

Available ✓ Optional ☐ Not Applicable ✗



### Technical Identity:

**Pore-free precision casting, stainless materials, adjustable gasketed, endurance to high pressures.**

### Usage Identity:

**Assembly without hammering or pressing for hydrostatic pressure test, high sealing ability dive to its adjustable gasket feature design, ideal design and weight for an ergonomic assembly.**