



AGILE, ROBUST,
SMART LAB SYSTEM.
SUSTAINABILITY AND RESILIENCE.

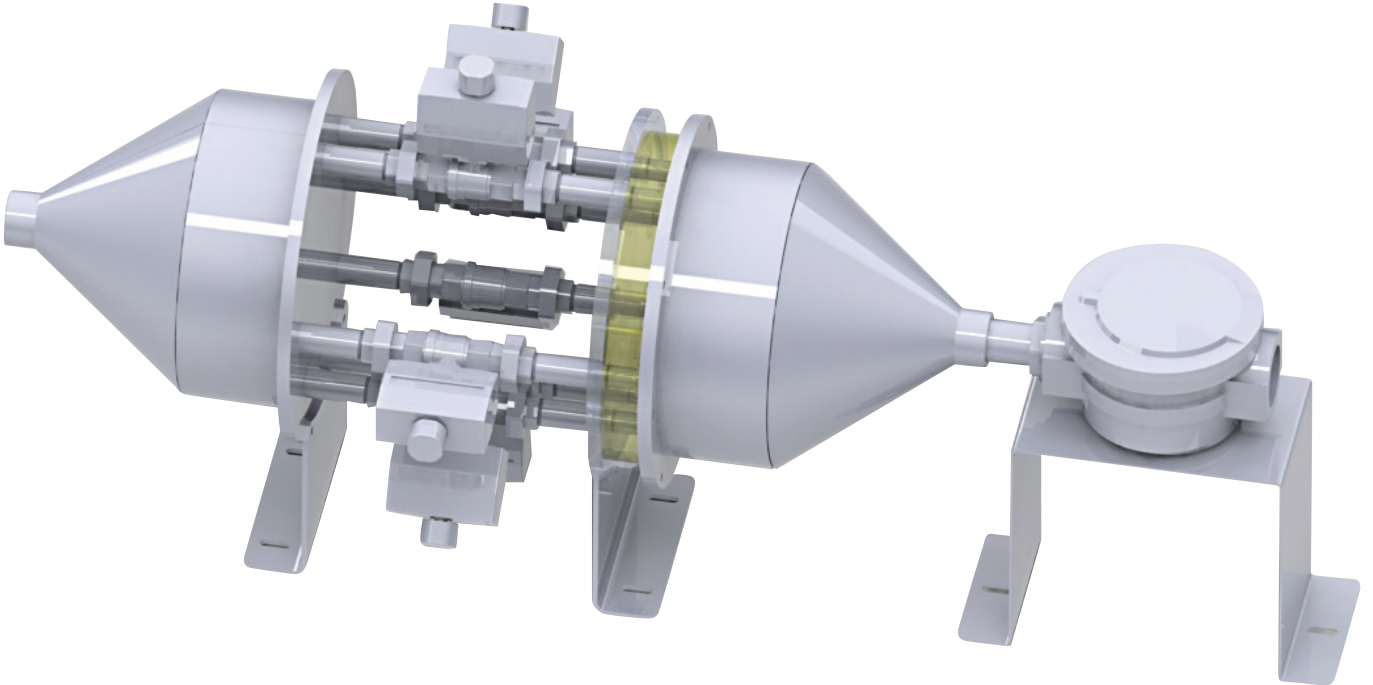
AL GAS METER CALIBRATION TESTER

Standards

014/32 EU (AB) (2004/22 AT)

AND TS EN 1359

Natural Gas Meter Test Machine, can perform flow control test of **6** or **12** gas meters at the same time, compliance with 2014/32 EU (AB) (2004/22 AT) and TS EN 1359 Standards for flowmeter calibration of natural gas. The machine allows you to determine in case of blockage in gas meter or pressure loss more than specified in the standard.



+90 212 924 56 52

www.alarge.com.tr

ALARGE ALIÇ AĞACI MAK. ELEK. AR-GE SAN. TİC. LTD. ŞTİ.

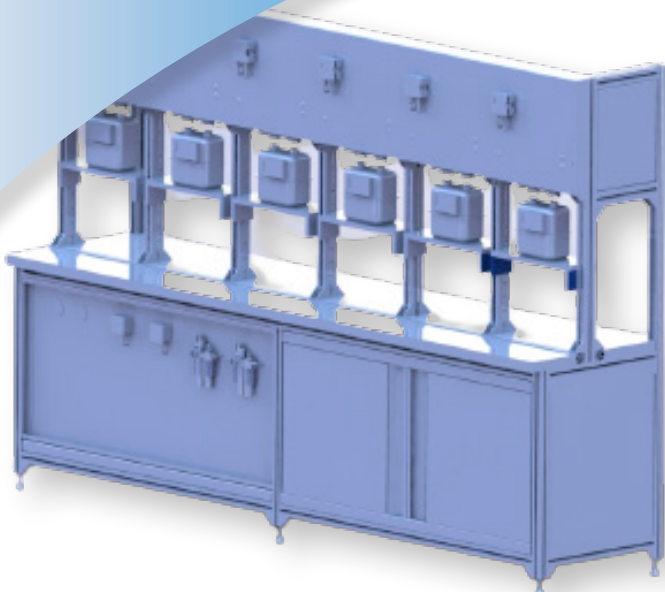
Çifte Havuzlar Mah. Eski Londra Asfaltı Cd. YTÜ Teknopark D2 Blok No: 2B01 Davutpaşa - İstanbul/TÜRKİYE

Fax: +90 212 278 61 33 Mail: info@alarge.com.tr

AL GAS METER

CALIBRATION TESTER

TECHNICAL SPECIFICATIONS



- ✓ The machine works with sonic nozzle system.
- ✓ It's measurement reliability is high because of $Mach > 1$.
- ✓ Boutique production that can made 3,6 and 12 line for G16, G10, G6 and G2,5 gas meters.
- ✓ It can test 12 gas meter at the same time.
- ✓ Outside temperature measuring sensibility of it is $\pm 0,1 \text{ }^\circ\text{C}$.
- ✓ Duct air temperature measuring sensibility is $\pm 0,1 \text{ }^\circ\text{C}$
- ✓ Gas meter pressure difference accuracy is high as $\%0,25$.
- ✓ Pressure difference can

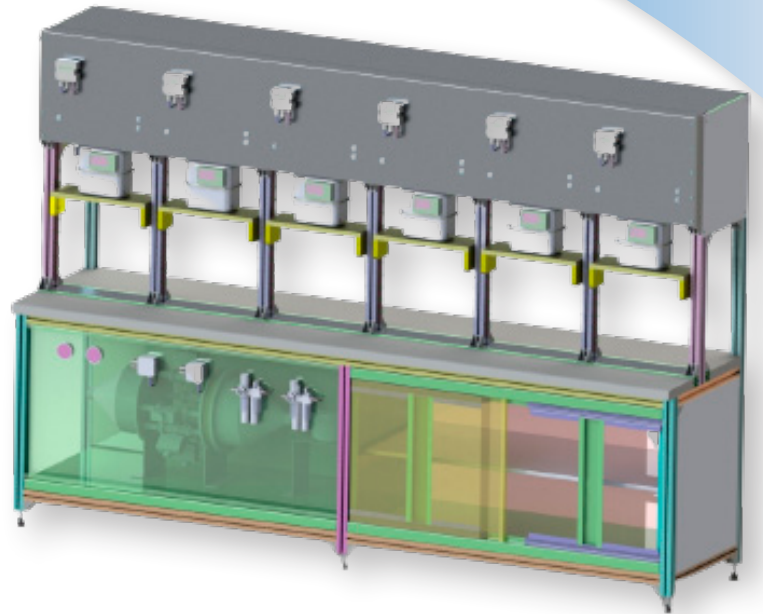
measured for all of gas meters.

- ✓ Test unit makes measurement error and pressure drop tests at Q_{max} , $0.2Q_{max}$, $0.1Q_{max}$ and Q_{min} flow points after that it can report their results.
- ✓ Gas meters can fixed on test unit, one by one.
- ✓ At least 6 gas meters or at least 12 gas meters should fixed on unit every test.
- ✓ Gas meters fixing distance can adjusted between 110– 130 mm.
- ✓ References of test unit is sonic nozzle.
- ✓ DN20–25–32 gas meter connectors will give with test unit.
- ✓ In accordance with PTB band 29, Temperature meters provides 0,05K resolution and $\%0,1K$ ($k=2$ %95) uncertainty value.
- ✓ In accordance with PTB band 29, pressure gauges provide 0,1mbar resolution and $\%0,3mbar$ ($k=2$ %95) uncertainty value.
- ✓ Definition of unlimited number of gas meters (Flow, flow rate,

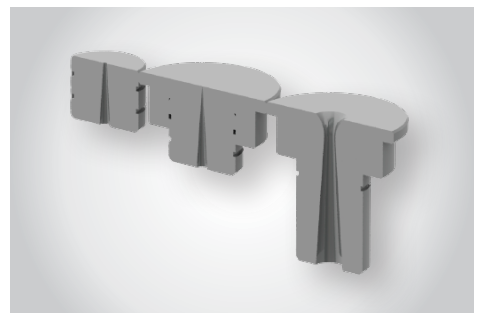
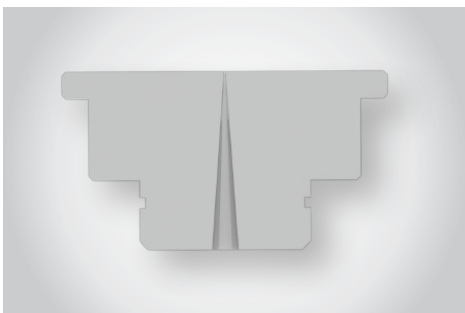
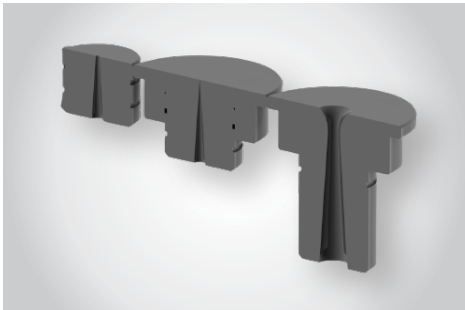


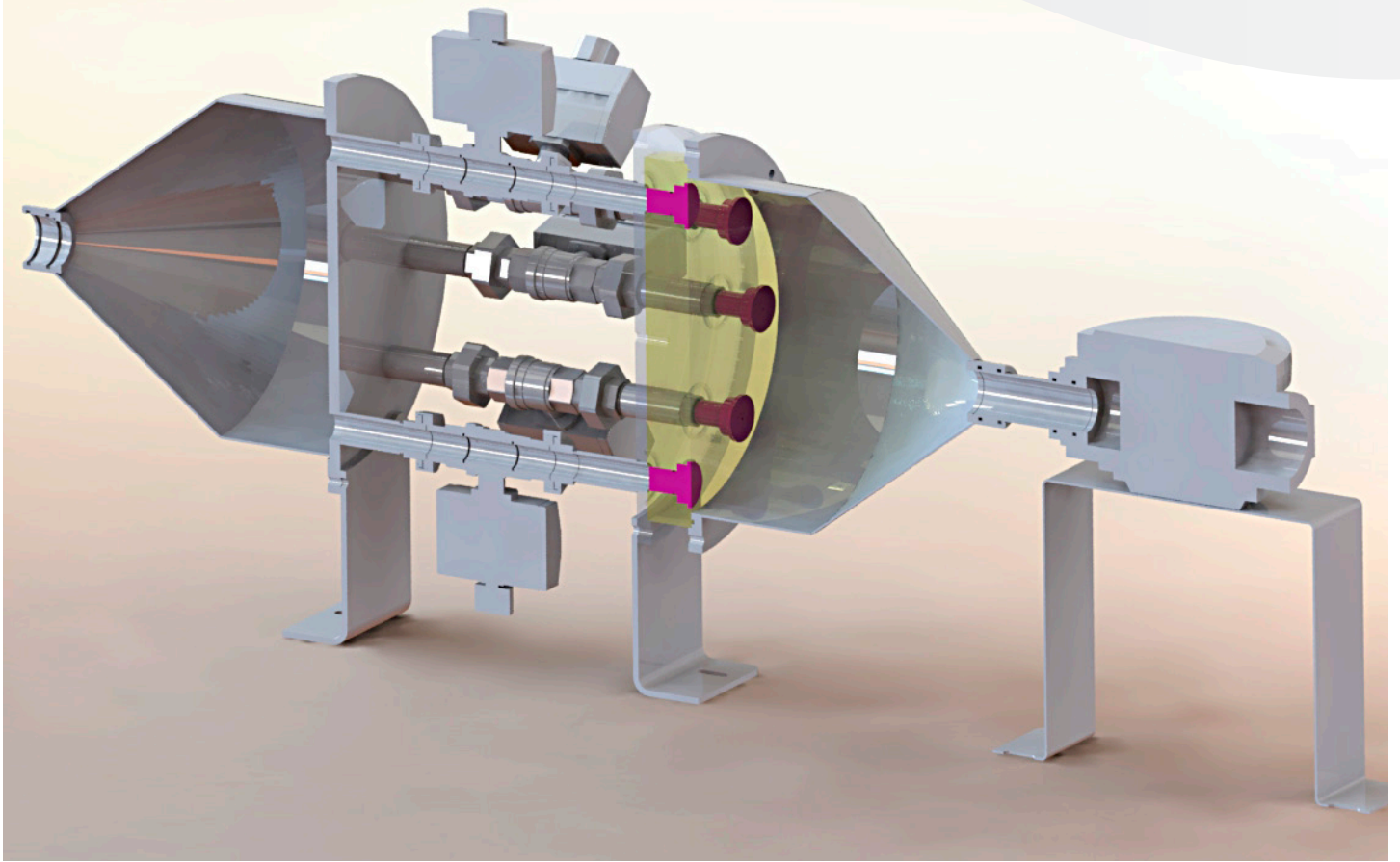
error limit, pressure drop, etc..)

- ✓ English and Turkish software suitable for testing and reporting
- ✓ Reworking of calibration value on software
- ✓ SQL based data saving structure
- ✓ Instant value monitoring during testing (flow, temperature, pressure, etc.)



SPECIAL SONIC NOZZLES





COMPLIANT STANDARTS

- ✓ Measurement and Measurement Tools Inspection Regulation
- ✓ 2014/32 EU (AB) MID Measurement Tools Inspection Regulation
- ✓ TS EN 1359- Gas meters with Diaphragm
- ✓ OIML R137 Gas meters
- ✓ PTB Band V29 Test Instructions Measuring Devices for Gas

Technical Identity:

- **Special %100 domestic manufactured sonic nozzles.**
- **Simultaneously 1 to 12 meters are to be test allowing.**
- **Automatic leak test.**

Usage Identity:

Database management, system network.