



AGILE, ROBUST,
SMART LAB SYSTEM.
SUSTAINABILITY AND RESILIENCE.

AL TANK TEST TANKS

Adjustable hanging design.



Internal pressure/hydrostatic tests are performed in conditioned water environment. Compliance with the standards **ISO 1167, ASTM D 1598, ASTM D 1599**. The water distribution into the AL TANK let $\pm 0,5 - 1^\circ\text{C}$, provided by the circulation of water in the tank.

Locations of the heaters, the fluid taken and feeding for circulation in the tank are designed with computer simulation and the results have been proved by EU accreditation.

It is suitable for PPRC, PPH, PPB, PE, PVC PE-RT pipes and even composite pipes. Database management, system network.

+90 212 924 56 52

www.alarge.com.tr

ALARGE ALIÇ AĞACI MAK. ELEK. AR-GE SAN. TİC. LTD. ŞTİ.

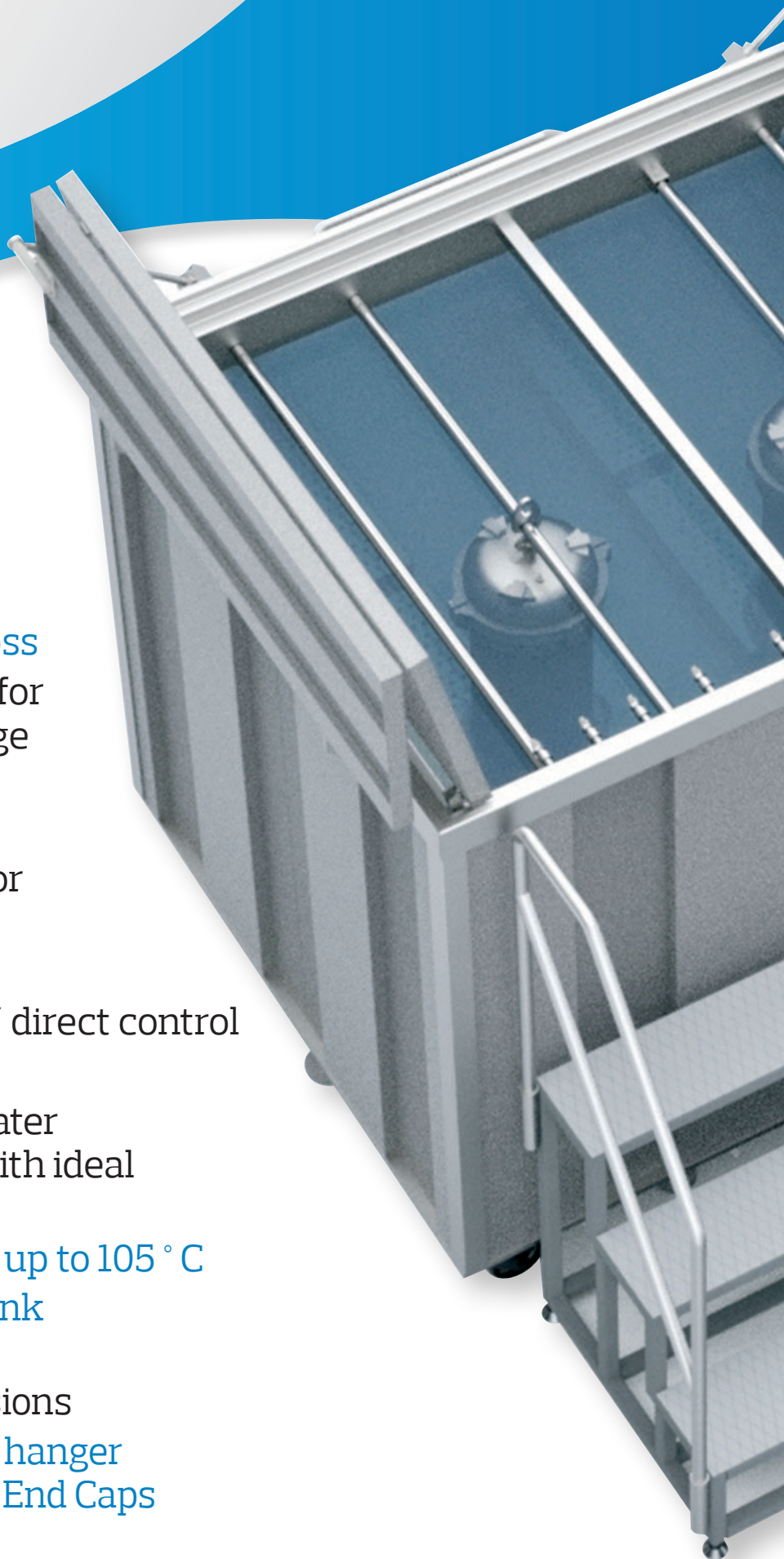
Çifte Havuzlar Mah. Eski Londra Asfaltı Cd. YTÜ Teknopark D2 Blok No: 2B01 Davutpaşa - İstanbul/TÜRKİYE

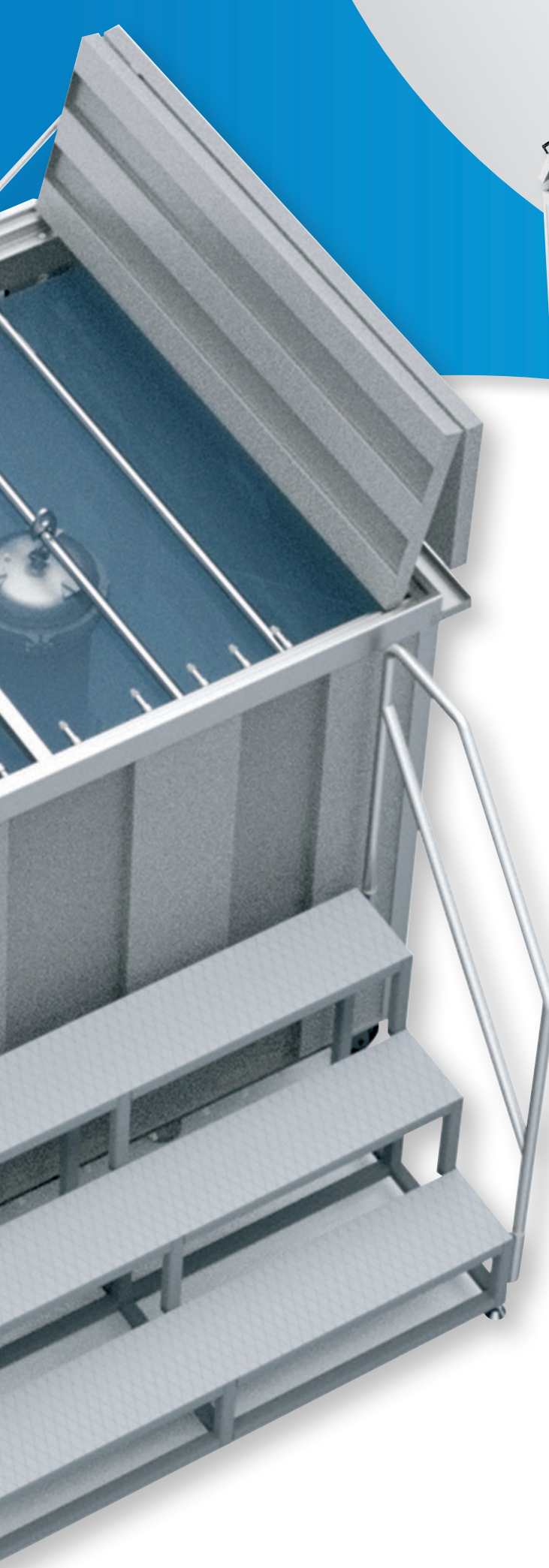
Fax: +90 212 278 61 33 Mail: info@alarge.com.tr

AL TANK TEST TANKS

TECHNICAL SPECIFICATIONS

- ✓ Zero steam leakage, energy saving with double layer insulation, minimum operating cost and water loss
- ✓ Double safety control for instant temperature change
- ✓ Automatic filling with water level control
- ✓ Safety Discharge Duct for High level water
- ✓ Bottom discharge
- ✓ Folding lid with remote / direct control
- ✓ Safe operation
- ✓ High performance for water temperature distribution with ideal balancing circulation
- ✓ Usage with glycol water up to 105 ° C
- ✓ Nearly up to $\pm 0,5$ ° C in-tank temperature distribution
- ✓ Applicable to any dimensions
- ✓ Positioning and traveling hanger system of test sample with End Caps inside the tank





CONTROL SYSTEM

- ✓ Fast data transferring 400 Hz
- ✓ 5.4 -10 " PLC Touch Screen (4.2", 7", 10") panel application.
- ✓ 17 - 62 " Touch Screen PC Panel
- ✓ Real-time temperature measurement up to 4 points
- ✓ Successful standard and accreditation requirements
- ✓ Connection to main pressure / hydrostatic test machine
- ✓ Frame around inner stainless cabinet (damage prevention)
- 1.2 mm outer coating
- Pneumatic cap drive system
- Wheel and fixing possibility
- Design without heat bridge
- Special cover gasket
- 1.5 mm up to 3 mm inside layer thickness.

MODEL	HEATING MODULE
Temperature Range	Environment Temp. - 95 °C
Sensitivity	± 0,1 °C
Accuracy	± 1 °C
Resolution	± 0,1 °C
Data Display	Tank Panel

MODEL	COOLING MODULE
Temperature Range	20 °C - Environment Temp.
Sensitivity	± 0,1 °C
Accuracy	± 1 °C
Resolution	± 0,1 °C
Data Display	Tank Panel

AL TANK TEST TANKS

TECHNICAL SPECIFICATIONS

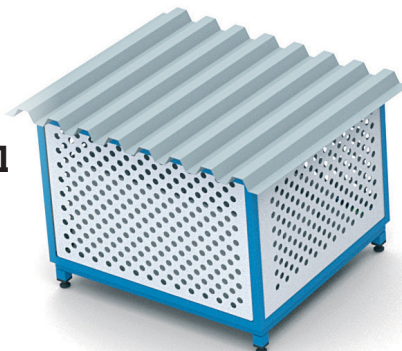
MODEL	AL-TANK S	AL-TANK M	AL-TANK L	AL-TANK B
Number of Lines	1-5	5-10	10-15	<input type="checkbox"/>
Internal Length	1,2 m	1,6 m	2,1m	<input type="checkbox"/>
Outer Length	1,5 m	1,9 m	2,4 m	Dependent to Internal Dimension
Internal Width	1,0 m	1,0 m	1,1m	
Outer Width	1,4 m	1,5 m	1,6 m	
Internal Height	1,2 m	1,2 m	1,2 m	
Outer Height (Cap Closed)	1,55 m	1,6 m	1,6 m	
Outer Height (Cap Opened)	2,2 m	2,3 m	2,3 m	
Number of Hanger	1-3	3-6	4-8	<input type="checkbox"/>
Foldable Cover	<input checked="" type="checkbox"/>	<input checked="" type="checkbox"/>	<input checked="" type="checkbox"/>	<input type="checkbox"/>
Heat Insulation	<input checked="" type="checkbox"/>	<input checked="" type="checkbox"/>	<input checked="" type="checkbox"/>	<input checked="" type="checkbox"/>
Water Discharge Valve	<input checked="" type="checkbox"/>	<input checked="" type="checkbox"/>	<input checked="" type="checkbox"/>	<input checked="" type="checkbox"/>
Water Level Sensor / Valve	<input checked="" type="checkbox"/>	<input checked="" type="checkbox"/>	<input checked="" type="checkbox"/>	<input checked="" type="checkbox"/>
Water Circulation Pump	150 W	150 W	250 W	400 W
Heating Module kW	7,5/12	10/18	15/30	20/50
Cooling Module kW	0,5	1kW	1,5/2,5 kW	3,5/9 kW
Material	304 Stainless Steel			
Control Panel 4" / 7"	<input checked="" type="checkbox"/>	<input checked="" type="checkbox"/>	<input checked="" type="checkbox"/>	<input checked="" type="checkbox"/>
Standarts	ISO 1167, ASTM D 1598, ASTM D 1599			
Air Pressure (Needing)	6-8 Bar			

Available Optional Not Applicable

Dimensions can be changed.

Technical Identity:

Homogeneous temperature distribution with heating system supported by analysis, insulation for energy saving, stainless steel cover and body, design with analysis software. Stainless steel extra profile frame.



Usage Identity:

Quick and easy connection, safe testing, special design. Database management, system network. Cooling and heating.

Foldable lid gasket

